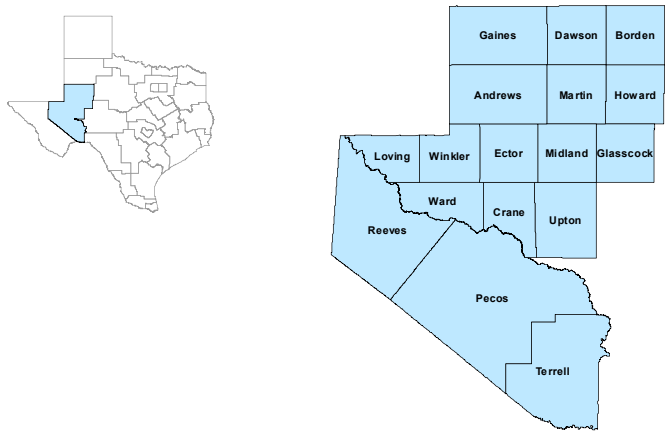


Permian Basin Workforce Development Area

April 2024



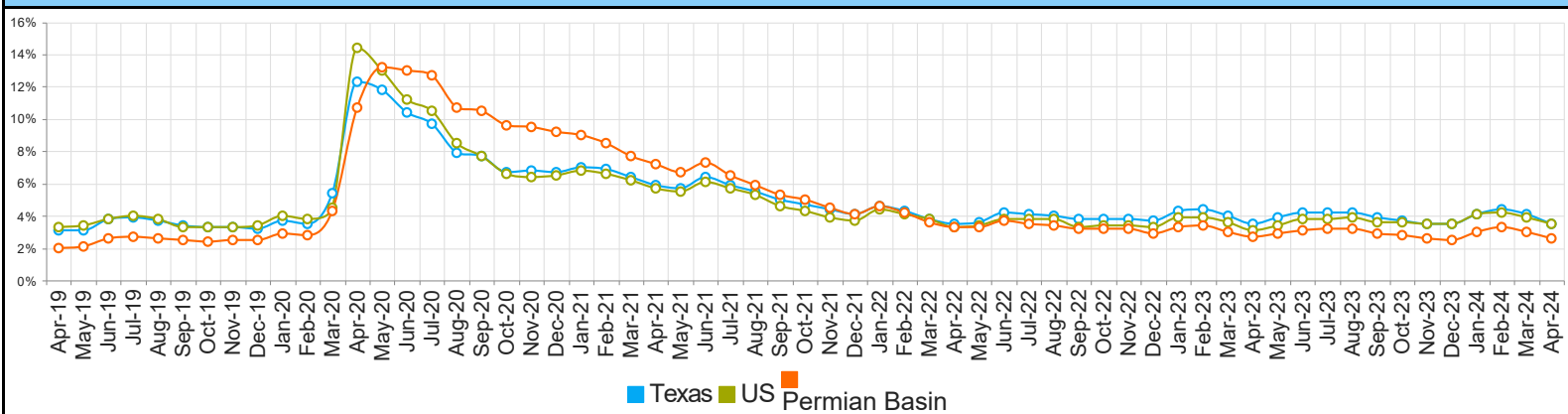
WDA Labor Force Statistics				
	Apr-24	Mar-24	Apr-23	Yearly Change
Civilian Labor Force	278,365	277,752	272,301	6,064
Employed	271,163	269,448	265,080	6,083
Unemployed	7,202	8,304	7,221	-19
Unemployment Rate	2.6%	3.0%	2.7%	-0.1%

Texas Labor Force Statistics				
	Apr-24	Mar-24	Apr-23	Yearly Change
Civilian Labor Force	15,305,019	15,276,654	15,001,944	303,075
Employed	14,762,482	14,654,123	14,473,233	289,249
Unemployed	542,537	622,531	528,711	13,826
Unemployment Rate	3.5%	4.1%	3.5%	0.0%

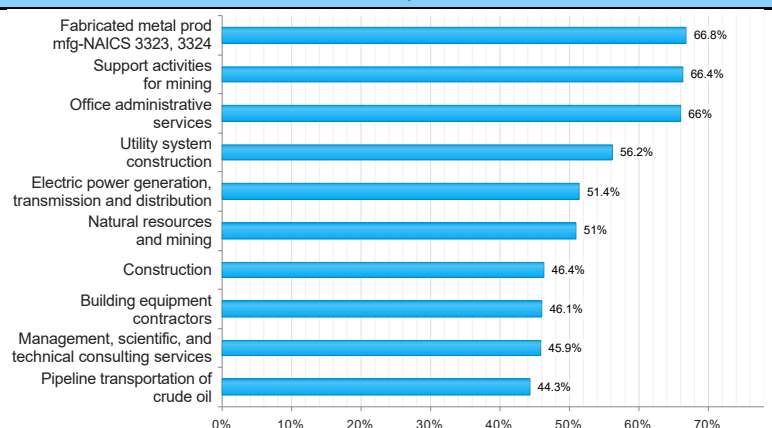
US Labor Force Statistics				
	Apr-24	Mar-24	Apr-23	Yearly Change
Civilian Labor Force	167,484,000	167,960,000	166,221,000	1,263,000
Employed	161,590,000	161,356,000	161,075,000	515,000
Unemployed	5,894,000	6,604,000	5,146,000	748,000
Unemployment Rate	3.5%	3.9%	3.1%	0.4%

Continued Claims for the Week of the 12th				
	Apr-24	Mar-24	Apr-23	Yearly Change
WDA	1,189	1,199	954	235
Texas	115,920	122,266	102,806	13,114

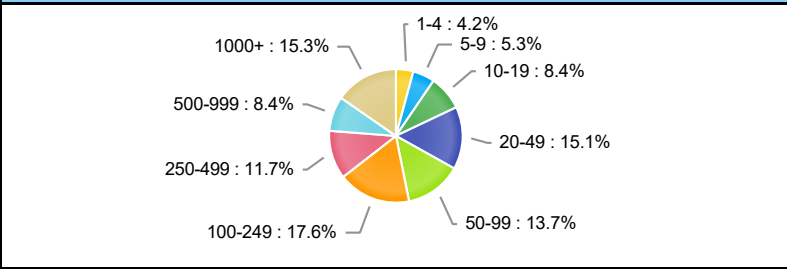
Historical Unemployment Rates



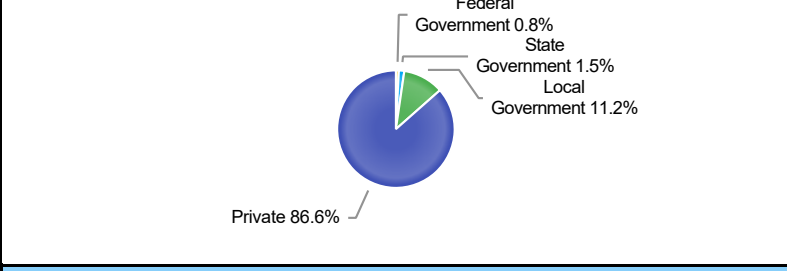
Projected Top Ten Fastest Growing Industries in WDA (% Growth 2020-2030)



Employment by Size Class (4th Quarter 2023)



Employment by Ownership (4th Quarter 2023)



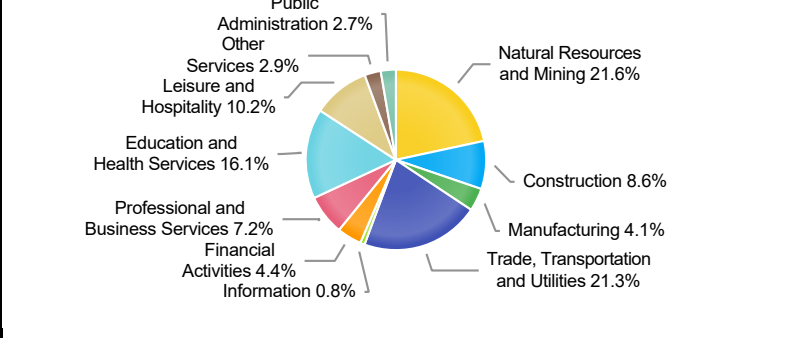
Average Weekly Wage (4th Quarter 2023)

	Q4 2023	Q3 2023	Q4 2022	Quarterly Change	Yearly Change
WDA	\$1,594	\$1,504	\$1,535	\$90	\$59
Texas	\$1,427	\$1,336	\$1,372	\$91	\$55
US	N/A	\$1,334	\$1,385	N/A	N/A

Employment by Industry (4th Quarter 2023, Percent Change)

Industry	Employment	% of Total	% Quarterly Change	% Yearly Change
Natural Resources and Mining	55,789	21.6%	-0.9%	3.5%
Construction	22,350	8.6%	1.1%	5.6%
Manufacturing	10,699	4.1%	1.5%	3.5%
Trade, Transportation and Utilities	54,947	21.3%	1.3%	3.2%
Information	1,980	0.8%	-1.2%	4.3%
Financial Activities	11,432	4.4%	1.3%	4.4%
Professional and Business Services	18,677	7.2%	0.6%	0.6%
Education and Health Services	41,732	16.1%	6.0%	4.0%
Leisure and Hospitality	26,334	10.2%	-0.8%	2.3%
Other Services	7,619	2.9%	-1.0%	2.2%
Public Administration	6,990	2.7%	0.3%	0.5%

Employment by Industry (4th Quarter 2023)



*The average weekly wage for U.S. for the latest quarter is not available. It will be updated shortly.