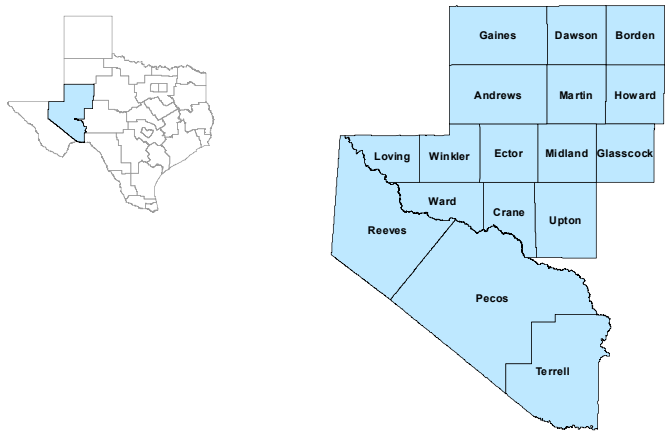


Permian Basin Workforce Development Area

March 2024



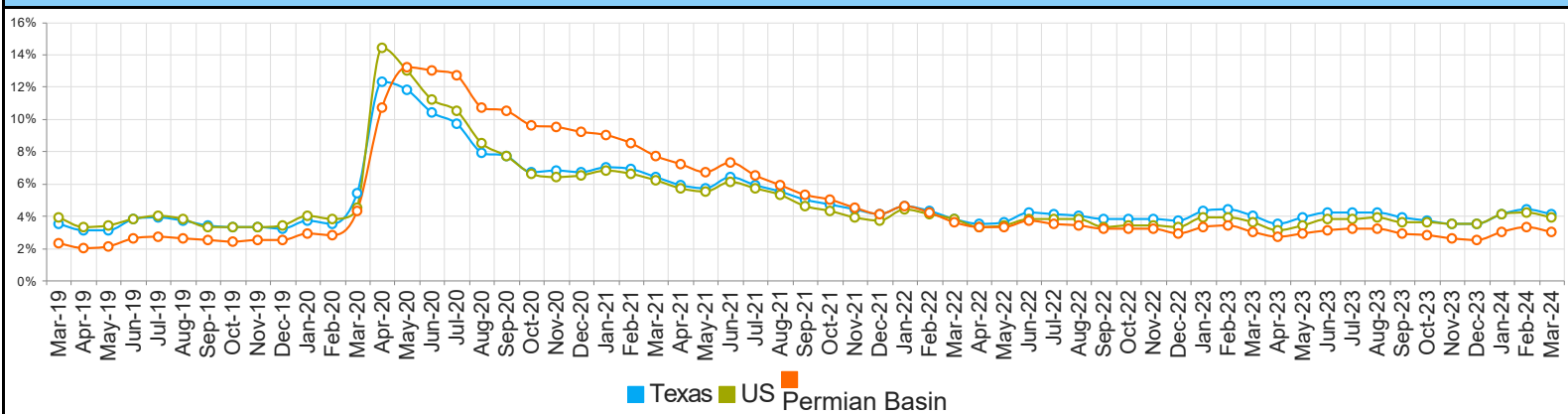
WDA Labor Force Statistics				
	Mar-24	Feb-24	Mar-23	Yearly Change
Civilian Labor Force	277,636	277,300	272,636	5,000
Employed	269,313	268,116	264,328	4,985
Unemployed	8,323	9,184	8,308	15
Unemployment Rate	3.0%	3.3%	3.0%	0.0%

Texas Labor Force Statistics				
	Mar-24	Feb-24	Mar-23	Yearly Change
Civilian Labor Force	15,276,869	15,295,403	15,058,520	218,349
Employed	14,653,971	14,629,674	14,453,735	200,236
Unemployed	622,898	665,729	604,785	18,113
Unemployment Rate	4.1%	4.4%	4.0%	0.1%

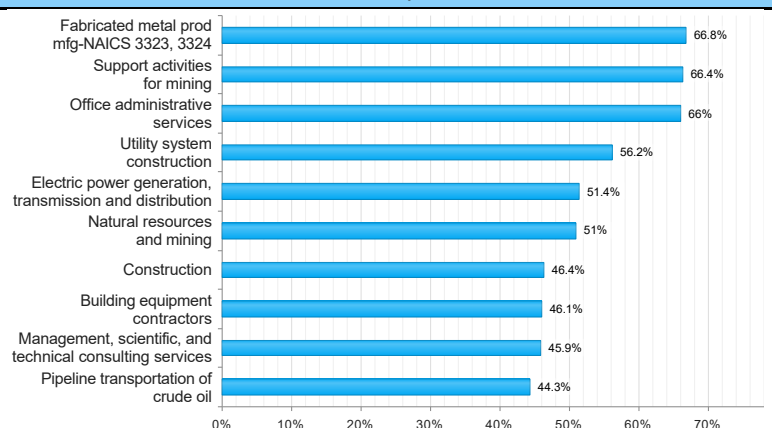
US Labor Force Statistics				
	Mar-24	Feb-24	Mar-23	Yearly Change
Civilian Labor Force	167,960,000	167,285,000	166,783,000	1,177,000
Employed	161,356,000	160,315,000	160,741,000	615,000
Unemployed	6,604,000	6,970,000	6,043,000	561,000
Unemployment Rate	3.9%	4.2%	3.6%	0.3%

Continued Claims for the Week of the 12th				
	Mar-24	Feb-24	Mar-23	Yearly Change
WDA	1,184	1,138	971	213
Texas	120,439	115,533	103,413	17,026

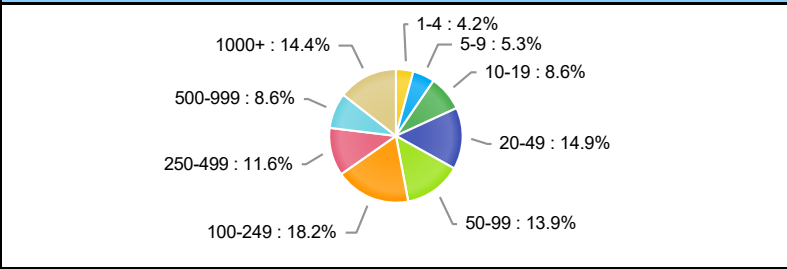
Historical Unemployment Rates



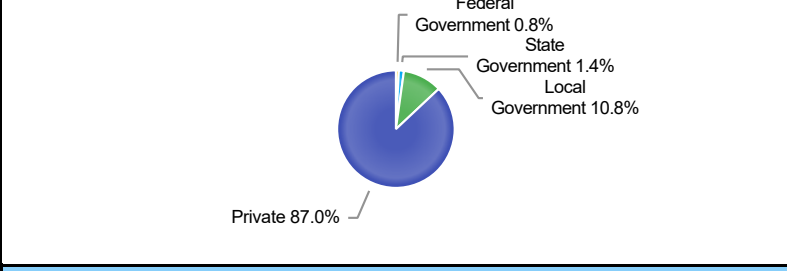
Projected Top Ten Fastest Growing Industries in WDA (% Growth 2020-2030)



Employment by Size Class (3rd Quarter 2023)



Employment by Ownership (3rd Quarter 2023)



Average Weekly Wage (3rd Quarter 2023)

	Q3 2023	Q2 2023	Q3 2022	Quarterly Change	Yearly Change
WDA	\$1,505	\$1,470	\$1,488	\$35	\$17
Texas	\$1,335	\$1,321	\$1,332	\$14	\$3
US	\$1,334	\$1,332	\$1,333	\$2	\$1

Employment by Industry (3rd Quarter 2023, Percent Change)

Industry	Employment	% of Total	% Quarterly Change	% Yearly Change
Natural Resources and Mining	56,394	22.1%	-0.8%	7.9%
Construction	22,085	8.6%	0.3%	7.4%
Manufacturing	10,538	4.1%	0.9%	1.2%
Trade, Transportation and Utilities	54,214	21.2%	1.1%	4.5%
Information	2,005	0.8%	-1.9%	-5.9%
Financial Activities	11,217	4.4%	1.1%	3.1%
Professional and Business Services	18,576	7.3%	-2.2%	2.6%
Education and Health Services	39,331	15.4%	-1.4%	3.3%
Leisure and Hospitality	26,514	10.4%	0.6%	2.0%
Other Services	7,673	3.0%	-0.6%	4.9%
Public Administration	6,968	2.7%	0.7%	-0.6%

Employment by Industry (3rd Quarter 2023)

