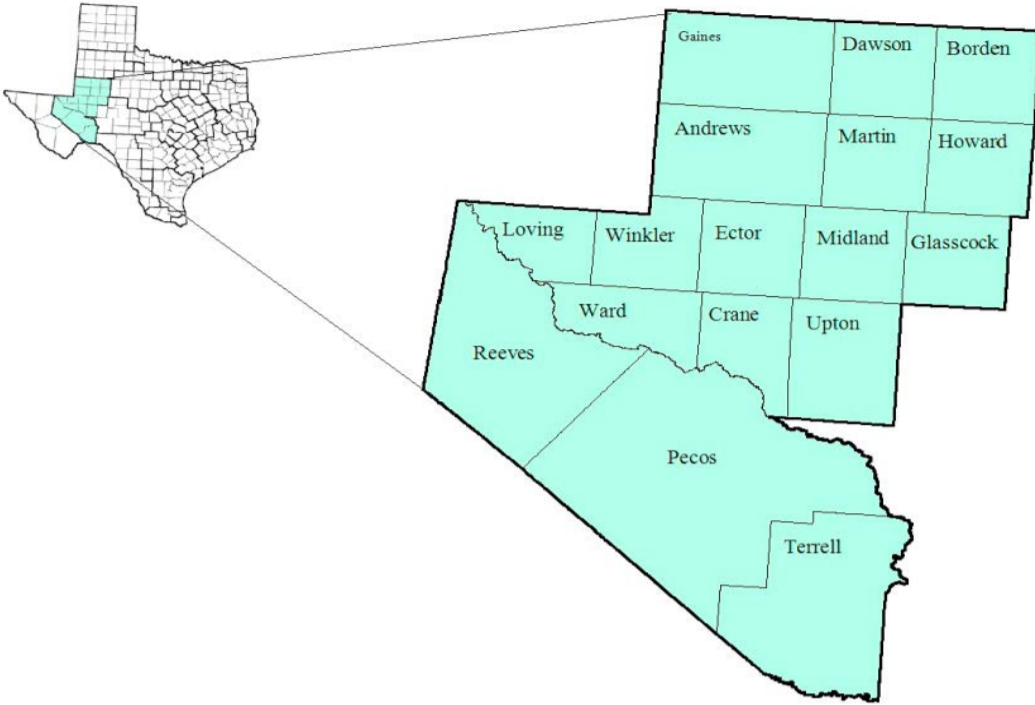


Permian Basin Workforce Development Area

February 2017



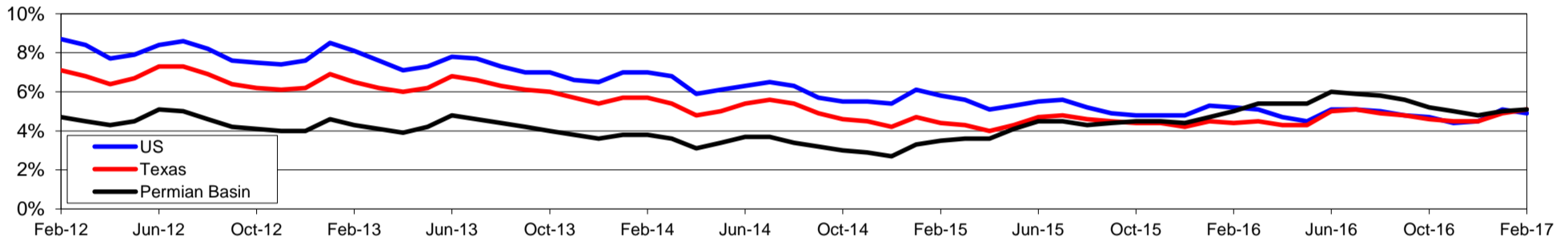
WDA Labor Force Statistics				
	Feb-17	Jan-17	Feb-16	OTY
CLF	223,385	221,215	227,395	-4,010
Employed	212,083	210,096	216,092	-4,009
Unemployed	11,302	11,119	11,303	-1
Rate	5.1%	5.0%	5.0%	0.1%

Texas Labor Force Statistics				
	Feb-17	Jan-17	Feb-16	OTY
CLF	13,466,399	13,356,586	13,185,966	280,433
Employed	12,777,968	12,695,730	12,604,648	173,320
Unemployed	688,431	660,856	581,318	107,113
Rate	5.1%	4.9%	4.4%	0.7%

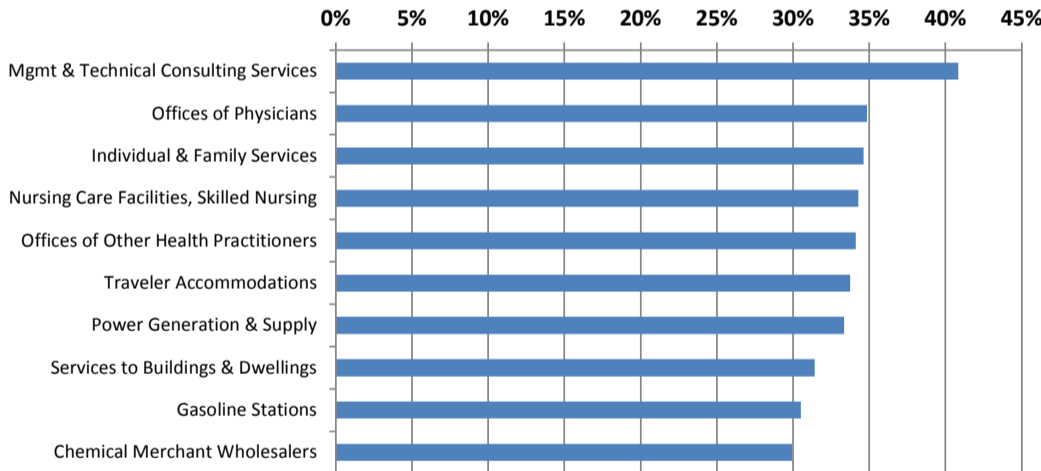
US Labor Force Statistics				
	Feb-17	Jan-17	Feb-16	OTY
CLF	159,482,000	158,676,000	158,279,000	1,203,000
Employed	151,594,000	150,527,000	150,060,000	1,534,000
Unemployed	7,887,000	8,149,000	8,219,000	-332,000
Rate	4.9%	5.1%	5.2%	-0.3%

Continued Claims for the Week of the 12th				
	Feb-17	Jan-17	Feb-16	OTY
WDA	1,419	1,665	3,796	-2,377
Texas	122,950	132,086	145,342	-22,392

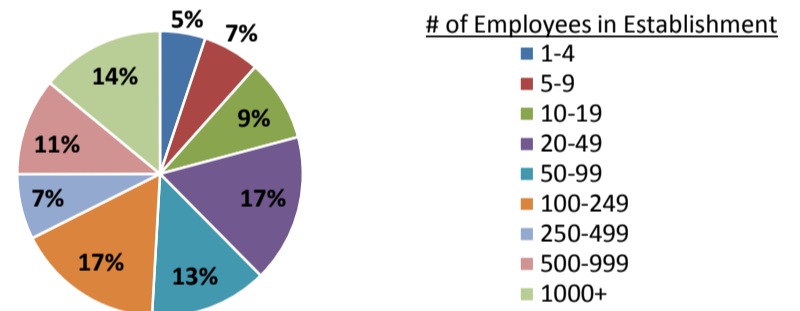
Historical Unemployment Rates



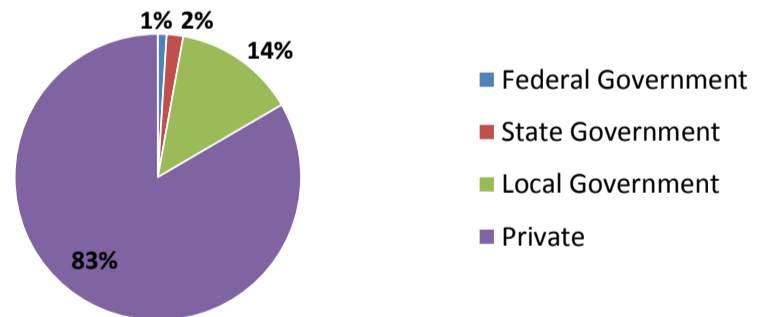
Projected Fastest Growing Industries in WDA (% growth 2014-2024)



Employment by Size Class (3rd Quarter 2016)



Employment by Ownership (3rd Quarter 2016)



Average Weekly Wage (3rd Quarter 2016)

	Q3 2016	Q2 2016	Q3 2015	Change	
				Quarter	Year
WDA	\$1,054	\$1,047	\$1,060	\$7	-\$6
Texas	\$1,042	\$1,000	\$999	\$42	\$43
US	\$1,027	\$988	\$974	\$39	\$53

Employment by Industry (3rd Quarter 2016, Percent Change)

Industry	Employment	% of total	% Change	
			Quarter	Year
Natural resources and mining	36,083	18.0%	2.6%	-10.4%
Construction	14,412	7.2%	-1.1%	-6.8%
Manufacturing	8,663	4.3%	-1.5%	-17.7%
Trade, transportation and utilities	44,114	21.9%	-1.3%	-7.3%
Information	1,860	0.9%	0.0%	5.8%
Financial activities	8,550	4.3%	-2.0%	-9.9%
Professional and business services	13,548	6.7%	-0.7%	-12.2%
Education and health services	38,165	19.0%	-2.6%	2.3%
Leisure and hospitality	21,844	10.9%	0.2%	-2.2%
Other services	6,228	3.1%	0.2%	-6.6%
Public administration	7,528	3.7%	1.6%	2.4%
Total	200,995	100.0%	-0.5%	-6.2%

Employment by Industry (3rd Quarter 2016)

