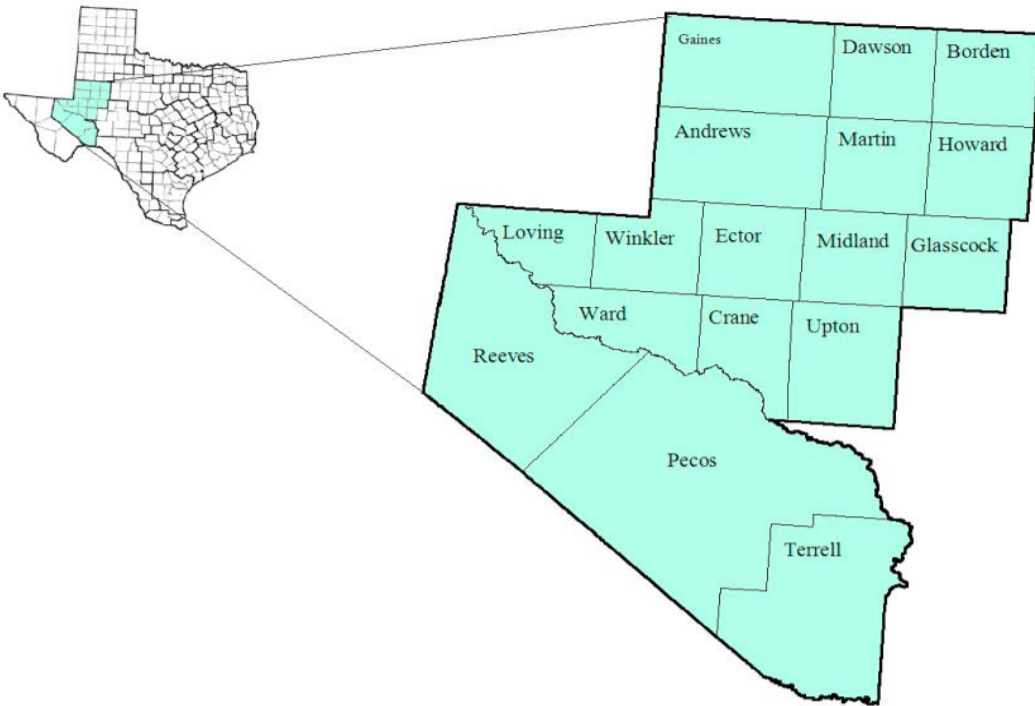


Permian Basin Workforce Development Area

April 2017



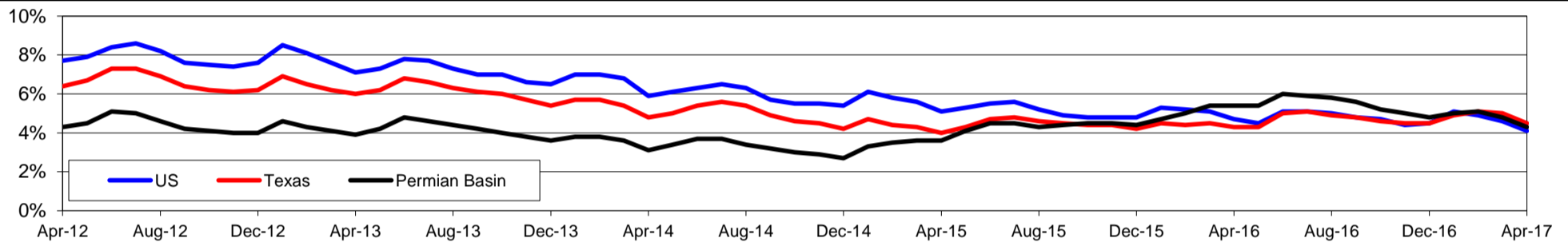
WDA Labor Force Statistics				
	Apr-17	Mar-17	Apr-16	OTY
CLF	221,562	222,488	225,148	-3,586
Employed	212,041	211,714	212,927	-886
Unemployed	9,521	10,774	12,221	-2,700
Rate	4.3%	4.8%	5.4%	-1.1%

Texas Labor Force Statistics				
	Apr-17	Mar-17	Apr-16	OTY
CLF	13,506,742	13,514,563	13,236,855	269,887
Employed	12,895,003	12,838,948	12,672,854	222,149
Unemployed	611,739	675,615	564,001	47,738
Rate	4.5%	5.0%	4.3%	0.2%

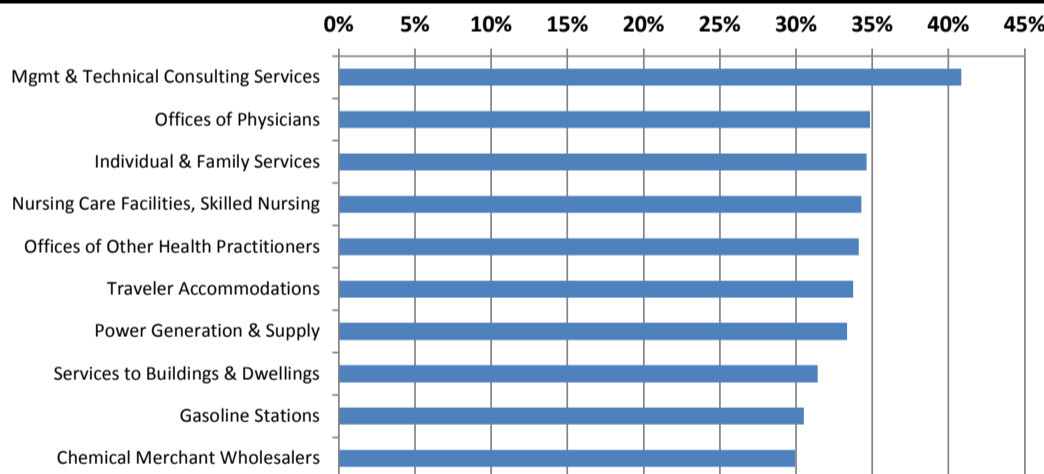
US Labor Force Statistics				
	Apr-17	Mar-17	Apr-16	OTY
CLF	159,817,000	159,912,000	158,488,000	1,329,000
Employed	153,262,000	152,628,000	151,075,000	2,187,000
Unemployed	6,555,000	7,284,000	7,413,000	-858,000
Rate	4.1%	4.6%	4.7%	-0.6%

Continued Claims for the Week of the 12th				
	Apr-17	Mar-17	Apr-16	OTY
WDA	1,180	1,312	4,618	-3,438
Texas	122,950	132,086	145,342	-22,392

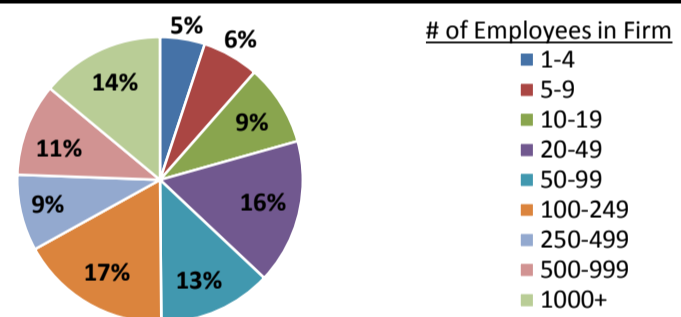
Historical Unemployment Rates



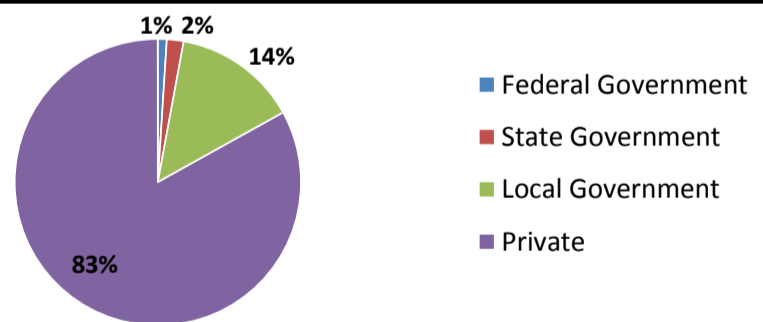
Projected Fastest Growing Industries in WDA (% growth 2014-2024)



Employment by Size Class (4th Quarter 2016)



Employment by Ownership (4th Quarter 2016)



Average Weekly Wage (4th Quarter 2016)

	Q4 2016	Q3 2016	Q4 2015	Change	
				Quarter	Year
WDA	\$1,121	\$1,056	\$1,129	\$66	-\$7
Texas	\$1,072	\$1,042	\$1,099	\$31	-\$27
US	N/A	\$1,027	\$1,083	N/A	N/A

Employment by Industry (4th Quarter 2016, Percent Change)

Industry	Employment	% of total	% Change	
			Quarter	Year
Natural resources and mining	37,105	18.1%	2.9%	-5.0%
Construction	14,722	7.2%	1.4%	-2.9%
Manufacturing	8,779	4.3%	1.3%	-11.6%
Trade, transportation and utilities	44,896	21.9%	1.8%	-5.6%
Information	1,993	1.0%	7.2%	11.3%
Financial activities	8,595	4.2%	0.2%	-7.6%
Professional and business services	13,609	6.7%	0.5%	-11.2%
Education and health services	39,955	19.5%	4.6%	2.2%
Leisure and hospitality	21,284	10.4%	-2.5%	-1.4%
Other services	6,067	3.0%	-2.6%	-7.0%
Public administration	7,619	3.7%	1.1%	3.7%
Total	204,624	100.0%	1.7%	-3.8%

Employment by Industry (4th Quarter 2016)

