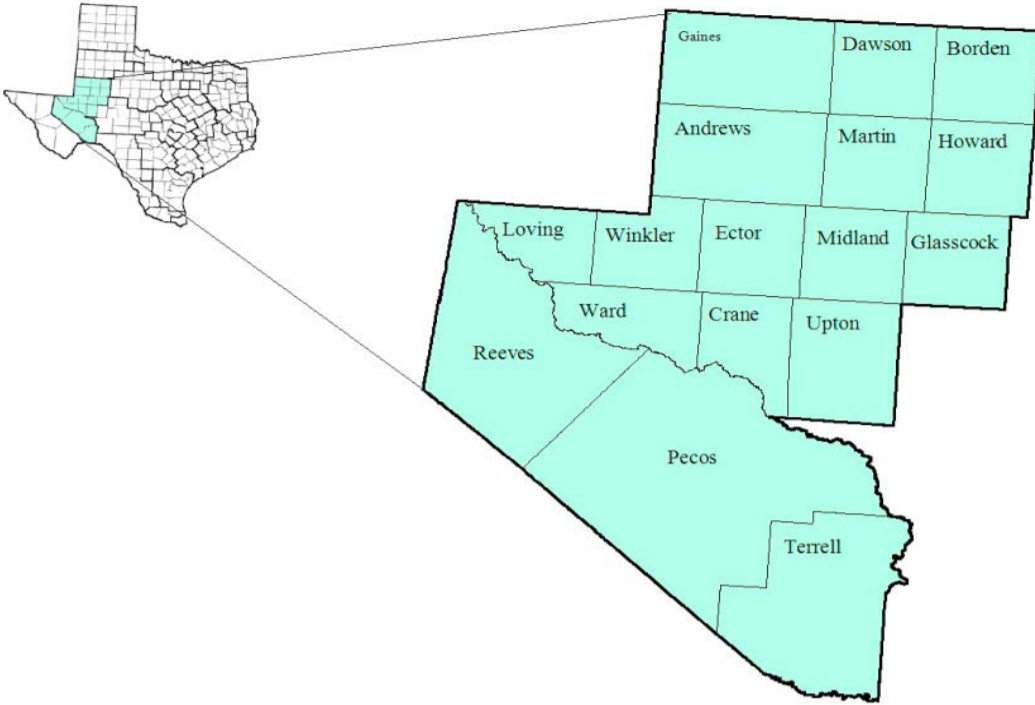


Permian Basin Workforce Development Area

June 2017



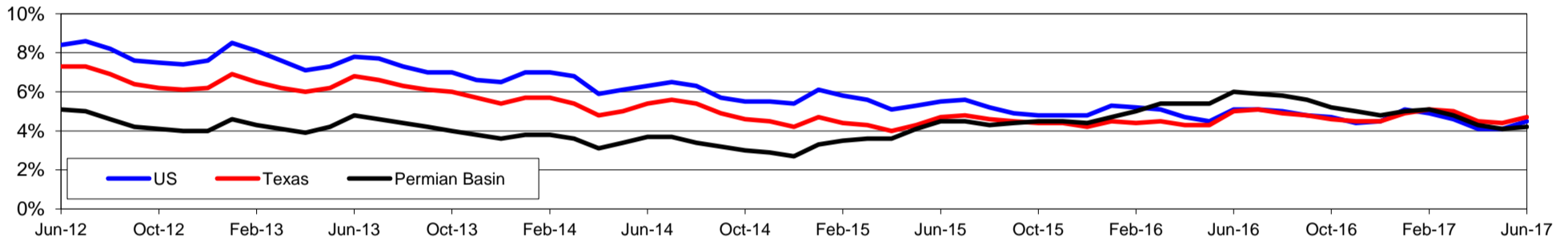
WDA Labor Force Statistics				
	Jun-17	May-17	Jun-16	OTY
CLF	219,703	220,170	223,819	-4,116
Employed	210,514	211,130	210,378	136
Unemployed	9,189	9,040	13,441	-4,252
Rate	4.2%	4.1%	6.0%	-1.8%

Texas Labor Force Statistics				
	Jun-17	May-17	Jun-16	OTY
CLF	13,464,322	13,450,012	13,319,665	144,657
Employed	12,833,254	12,858,020	12,656,717	176,537
Unemployed	631,068	591,992	662,948	-31,880
Rate	4.7%	4.4%	5.0%	-0.3%

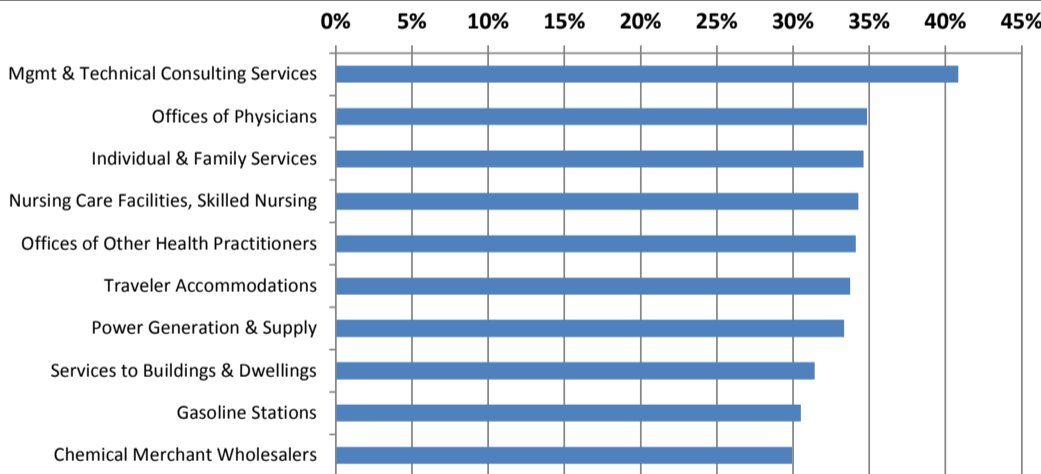
US Labor Force Statistics				
	Jun-17	May-17	Jun-16	OTY
CLF	161,337,000	159,979,000	160,135,000	1,202,000
Employed	154,086,000	153,407,000	151,990,000	2,096,000
Unemployed	7,250,000	6,572,000	8,144,000	-894,000
Rate	4.5%	4.1%	5.1%	-0.6%

Continued Claims for the Week of the 12th				
	Jun-17	May-17	Jun-16	OTY
WDA	1,047	1,127	4,211	-3,164
Texas	123,045	113,603	157,420	-34,375

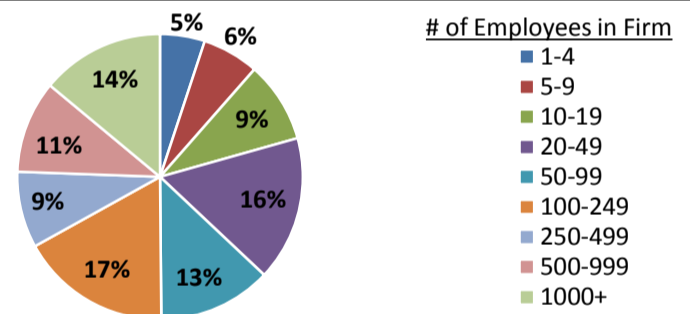
Historical Unemployment Rates



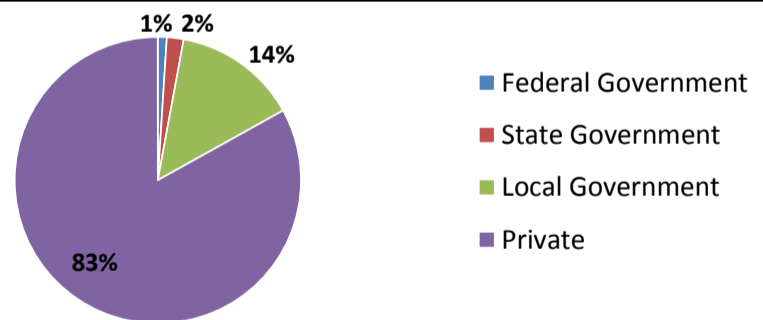
Projected Fastest Growing Industries in WDA (% growth 2014-2024)



Employment by Size Class (4th Quarter 2016)



Employment by Ownership (4th Quarter 2016)



Average Weekly Wage (4th Quarter 2016)

	Q4 2016	Q3 2016	Q4 2015	Change	
				Quarter	Year
WDA	\$1,121	\$1,056	\$1,129	\$66	-\$7
Texas	\$1,072	\$1,042	\$1,099	\$31	-\$27
US	\$1,067	\$1,027	\$1,083	\$40	-\$16

Employment by Industry (4th Quarter 2016, Percent Change)

Industry	Employment	% of total	% Change	
			Quarter	Year
Natural resources and mining	37,105	18.1%	2.9%	-5.0%
Construction	14,722	7.2%	1.4%	-2.9%
Manufacturing	8,779	4.3%	1.3%	-11.6%
Trade, transportation and utilities	44,896	21.9%	1.8%	-5.6%
Information	1,993	1.0%	7.2%	11.3%
Financial activities	8,595	4.2%	0.2%	-7.6%
Professional and business services	13,609	6.7%	0.5%	-11.2%
Education and health services	39,955	19.5%	4.6%	2.2%
Leisure and hospitality	21,284	10.4%	-2.5%	-1.4%
Other services	6,067	3.0%	-2.6%	-7.0%
Public administration	7,619	3.7%	1.1%	3.7%
Total	204,624	100.0%	1.7%	-3.8%

Employment by Industry (4th Quarter 2016)

