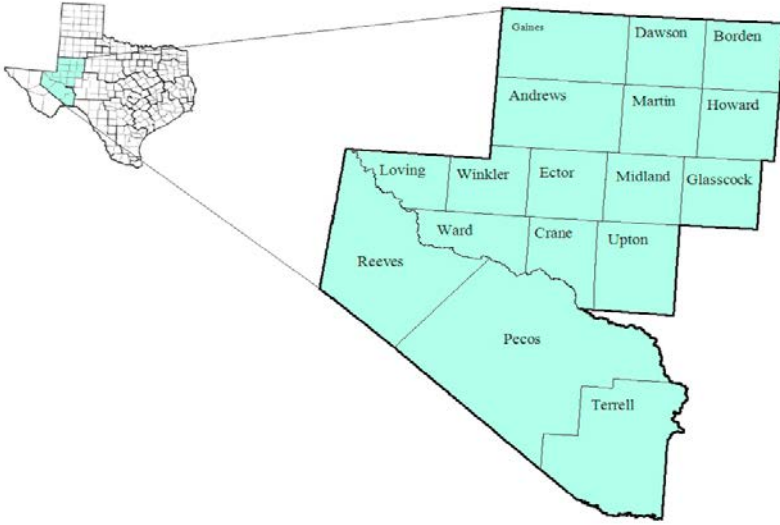


# Permian Basin Workforce Development Area

July 2017



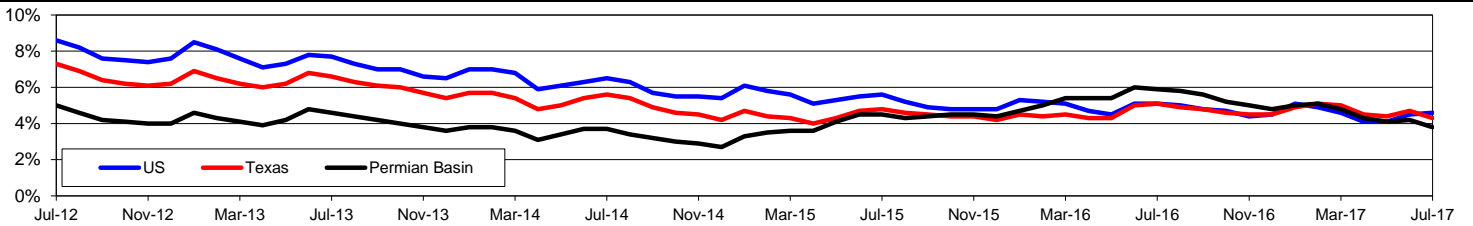
WDA Labor Force Statistics				
	Jul-17	Jun-17	Jul-16	OTY
CLF	219,885	220,138	224,215	-4,330
Employed	211,534	210,953	210,937	597
Unemployed	8,351	9,185	13,278	-4,927
Rate	3.8%	4.2%	5.9%	-2.1%

Texas Labor Force Statistics				
	Jul-17	Jun-17	Jul-16	OTY
CLF	13,433,444	13,462,252	13,356,834	76,610
Employed	12,849,486	12,831,118	12,681,873	167,613
Unemployed	583,958	631,134	674,961	-91,003
Rate	4.3%	4.7%	5.1%	-0.8%

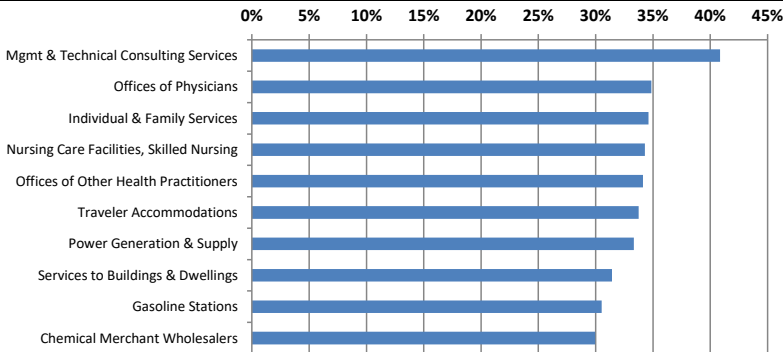
US Labor Force Statistics				
	Jul-17	Jun-17	Jul-16	OTY
CLF	161,911,000	161,337,000	160,705,000	1,206,000
Employed	154,470,000	154,086,000	152,437,000	2,033,000
Unemployed	7,441,000	7,250,000	8,267,000	-826,000
Rate	4.6%	4.5%	5.1%	-0.5%

Continued Claims for the Week of the 12th				
	Jul-17	Jun-17	Jul-16	OTY
WDA	993	1,062	3,841	-2,848
Texas	123,407	124,197	157,732	-34,325

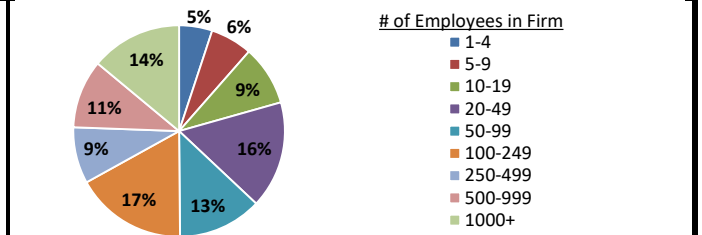
## Historical Unemployment Rates



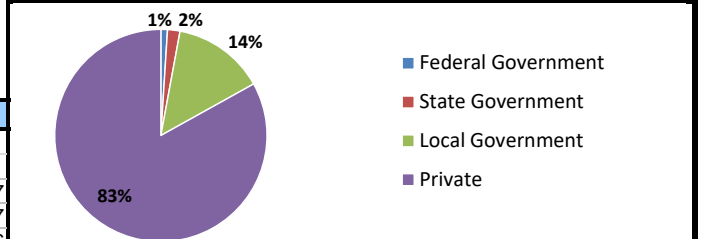
## Projected Fastest Growing Industries in WDA (% growth 2014-2024)



## Employment by Size Class (4th Quarter 2016)



## Employment by Ownership (4th Quarter 2016)



## Average Weekly Wage (4th Quarter 2016)

	Q4 2016	Q3 2016	Q4 2015	Change	
				Quarter	Year
WDA	\$1,121	\$1,056	\$1,129	\$66	-\$7
Texas	\$1,072	\$1,042	\$1,099	\$31	-\$27
US	\$1,067	\$1,027	\$1,083	\$40	-\$16

## Employment by Industry (4th Quarter 2016, Percent Change)

Industry	Employment	% of total	% Change	
			Quarter	Year
Natural resources and mining	37,105	18.1%	2.9%	-5.0%
Construction	14,722	7.2%	1.4%	-2.9%
Manufacturing	8,779	4.3%	1.3%	-11.6%
Trade, transportation and utilities	44,896	21.9%	1.8%	-5.6%
Information	1,993	1.0%	7.2%	11.3%
Financial activities	8,595	4.2%	0.2%	-7.6%
Professional and business services	13,609	6.7%	0.5%	-11.2%
Education and health services	39,955	19.5%	4.6%	2.2%
Leisure and hospitality	21,284	10.4%	-2.5%	-1.4%
Other services	6,067	3.0%	-2.6%	-7.0%
Public administration	7,619	3.7%	1.1%	3.7%
<b>Total</b>	<b>204,624</b>	<b>100.0%</b>	<b>1.7%</b>	<b>-3.8%</b>

## Employment by Industry (4th Quarter 2016)

