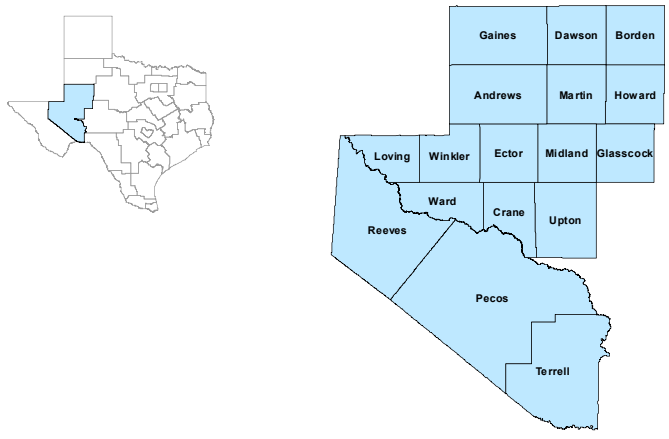


Permian Basin Workforce Development Area

May 2024



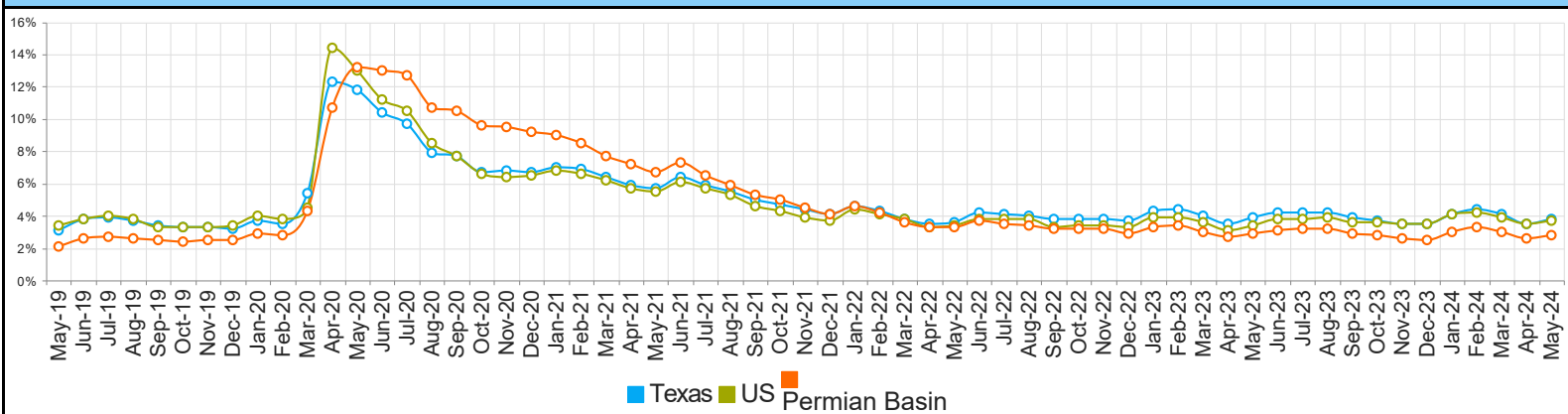
WDA Labor Force Statistics				
	May-24	Apr-24	May-23	Yearly Change
Civilian Labor Force	277,505	278,281	271,879	5,626
Employed	269,739	271,090	263,936	5,803
Unemployed	7,766	7,191	7,943	-177
Unemployment Rate	2.8%	2.6%	2.9%	-0.1%

Texas Labor Force Statistics				
	May-24	Apr-24	May-23	Yearly Change
Civilian Labor Force	15,284,842	15,304,322	14,990,077	294,765
Employed	14,709,904	14,762,048	14,407,172	302,732
Unemployed	574,938	542,274	582,905	-7,967
Unemployment Rate	3.8%	3.5%	3.9%	-0.1%

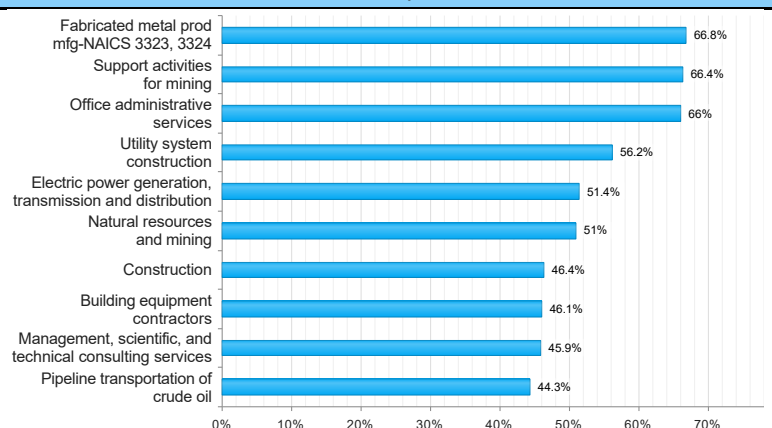
US Labor Force Statistics				
	May-24	Apr-24	May-23	Yearly Change
Civilian Labor Force	167,576,000	167,484,000	166,702,000	874,000
Employed	161,341,000	161,590,000	161,002,000	339,000
Unemployed	6,235,000	5,894,000	5,700,000	535,000
Unemployment Rate	3.7%	3.5%	3.4%	0.3%

Continued Claims for the Week of the 12th				
	May-24	Apr-24	May-23	Yearly Change
WDA	1,209	1,205	993	216
Texas	119,200	117,431	107,169	12,031

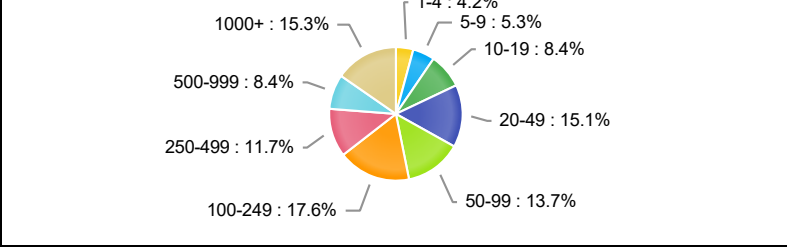
Historical Unemployment Rates



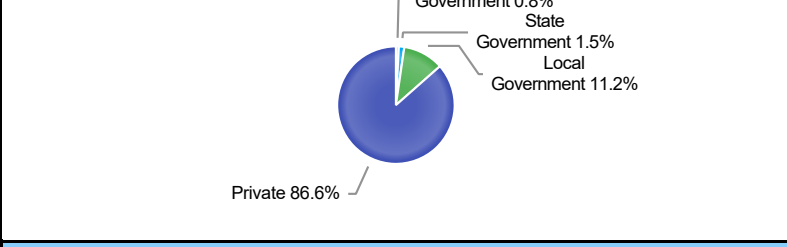
Projected Top Ten Fastest Growing Industries in WDA (% Growth 2020-2030)



Employment by Size Class (4th Quarter 2023)



Employment by Ownership (4th Quarter 2023)



Average Weekly Wage (4th Quarter 2023)

	Q4 2023	Q3 2023	Q4 2022	Quarterly Change	Yearly Change
WDA	\$1,594	\$1,504	\$1,535	\$90	\$59
Texas	\$1,427	\$1,336	\$1,372	\$91	\$55
US	\$1,435	\$1,334	\$1,385	\$101	\$50

Employment by Industry (4th Quarter 2023, Percent Change)

Industry	Employment	% of Total	% Quarterly Change	% Yearly Change
Natural Resources and Mining	55,789	21.6%	-0.9%	3.5%
Construction	22,350	8.6%	1.1%	5.6%
Manufacturing	10,699	4.1%	1.5%	3.5%
Trade, Transportation and Utilities	54,947	21.3%	1.3%	3.2%
Information	1,980	0.8%	-1.2%	4.3%
Financial Activities	11,432	4.4%	1.3%	4.4%
Professional and Business Services	18,677	7.2%	0.6%	0.6%
Education and Health Services	41,732	16.1%	6.0%	4.0%
Leisure and Hospitality	26,334	10.2%	-0.8%	2.3%
Other Services	7,619	2.9%	-1.0%	2.2%
Public Administration	6,990	2.7%	0.3%	0.5%

Employment by Industry (4th Quarter 2023)

