

David Mims Business Park



52 ACRES



I-20 Frontage, Midland, Texas



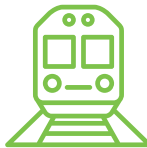
12" water line with 2000 gallons per minute capacity



12" sewer line with 1000 gallons per minute capacity



2 megawatts of power currently available

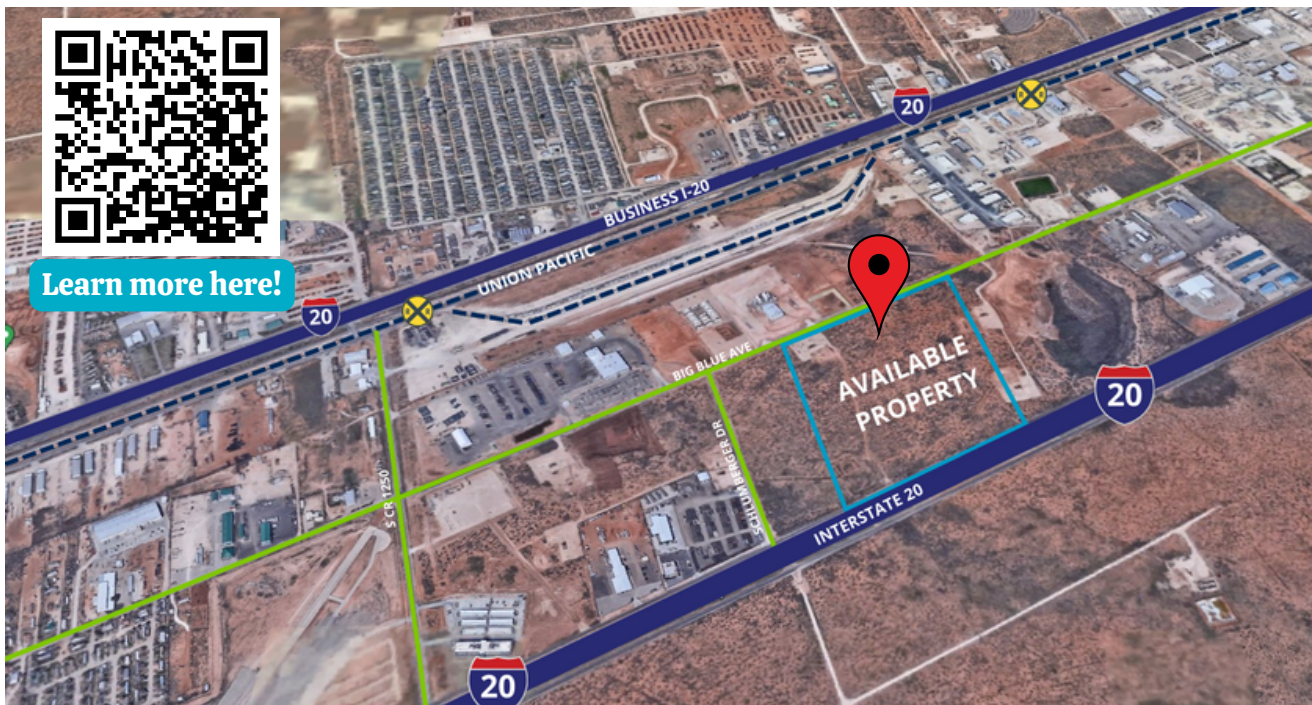


Located next to the Agri-Empresa Trans Load & Storage Facility serviced by the Union Pacific Railroad

- Wholly owned by Midland Development Corporation
- Discounted land price & cash incentives available for diversified industries
- Rail Access
- Zoned Light Industrial
- Natural Gas on Site
- Municipal Water & Sewer on Site



Learn more here!



About the MDC

The **Midland Development Corporation** (MDC) provides assistance to businesses that operate within **Midland** city limits or are considering moving to West Texas. Our organization centers around **creating opportunities** for businesses and employees. We do so through economic **development** activities, **outreach**, **education** and by providing **support**.



“Promote and advance opportunities that enhance and diversify the strength and stability of the Midland economy.”



capital + employment incentives | city sale + tax abatements | economic data

Located smack dab in between Fort Worth and El Paso, **Midland**, sits atop the largest petroleum-producing basin in the United States known as the **Permian Basin**. Approximately 40% of America's oil and gas reserves are in reservoirs in the Basin. But renewable energy is gaining importance in the area, too. **West Texas** is home to some of the nation's largest wind farms. Midland's per capita income of \$124,667 continually ranks the highest in the country and is double the national average. With an **median age of 31**, and only getting younger, Midland's transforming itself into a **desert destination** for professionals and families alike.



Midland MSA Population
176,914



Tax Rate \$1.56 per \$100 assessed value
Per Capita Income \$124,667



Midland-Odessa Population
362,925



Sales Tax 8.25%



Higher Education:
Midland College, University of Texas of the Permian Basin



272,931 Permian Basin Civilian Labor Force





BUSINESS I-20

UNION PACIFIC

BIG BLUE AVE

SCHUMBERGER DR

S CR 1250

AVAILABLE
PROPERTY

INTERSTATE 20





