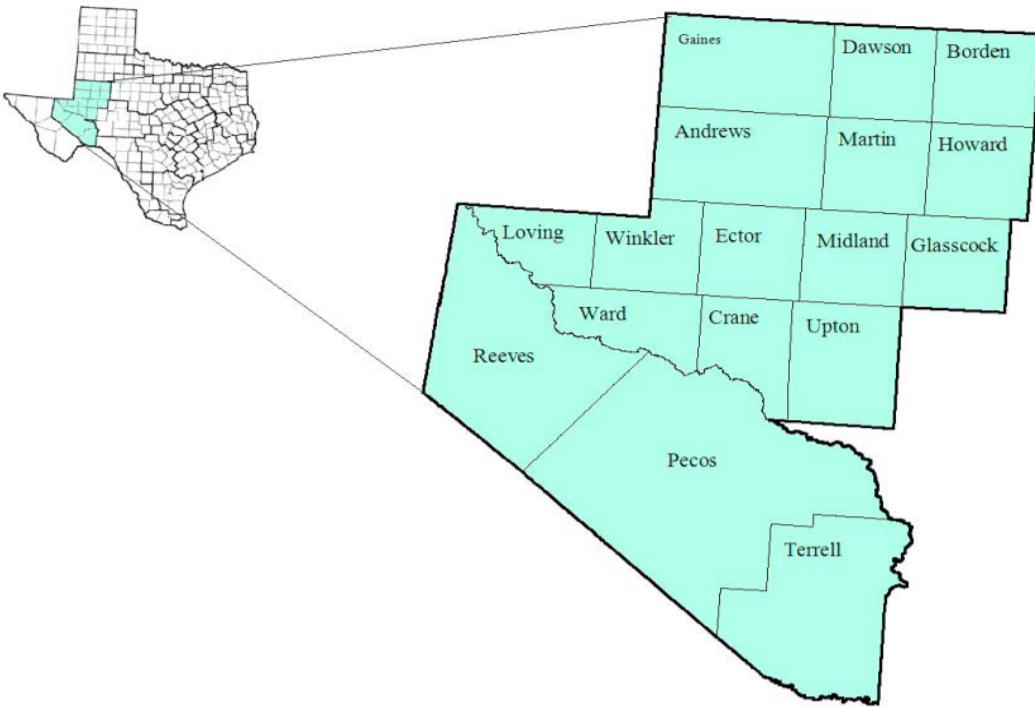


Permian Basin Workforce Development Area

January 2017



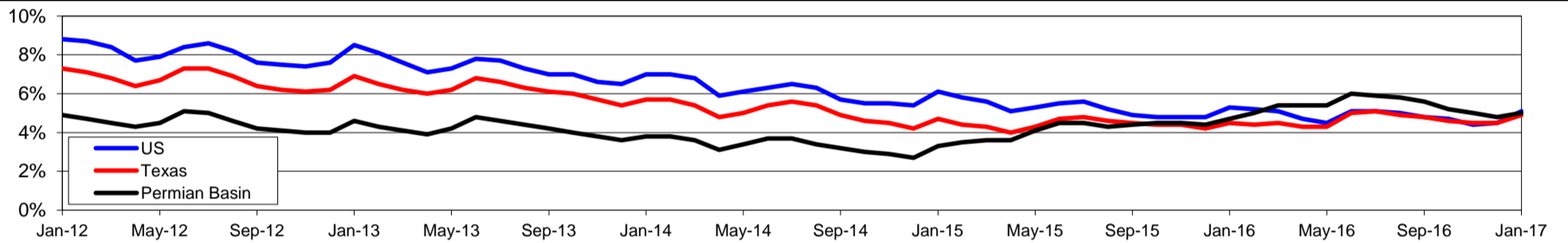
WDA Labor Force Statistics				
	Jan-17	Dec-16	Jan-16	OTY
CLF	221,335	221,099	227,474	-6,139
Employed	210,218	210,396	216,674	-6,456
Unemployed	11,117	10,703	10,800	317
Rate	5.0%	4.8%	4.7%	0.3%

Texas Labor Force Statistics				
	Jan-17	Dec-16	Jan-16	OTY
CLF	13,357,997	13,353,321	13,112,957	245,040
Employed	12,697,121	12,747,329	12,521,460	175,661
Unemployed	660,876	605,992	591,497	69,379
Rate	4.9%	4.5%	4.5%	0.4%

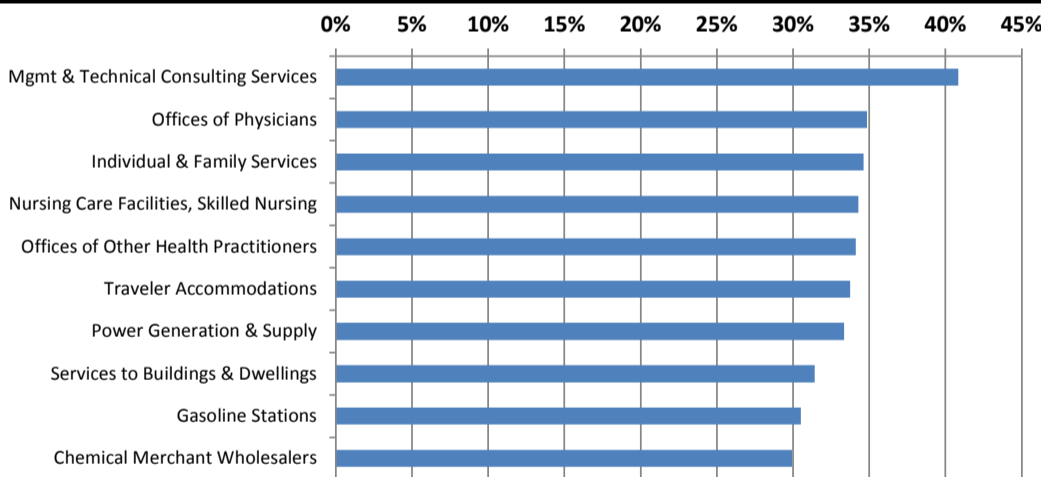
US Labor Force Statistics				
	Jan-17	Dec-16	Jan-16	OTY
CLF	158,676,000	158,968,000	157,347,000	1,329,000
Employed	150,527,000	151,798,000	149,037,000	1,490,000
Unemployed	8,149,000	7,170,000	8,309,000	-160,000
Rate	5.1%	4.5%	5.3%	-0.2%

Continued Claims for the Week of the 12th				
	Jan-17	Dec-16	Jan-16	OTY
WDA	1,661	1,948	3,204	-1,543
Texas	131,825	129,904	143,155	-11,330

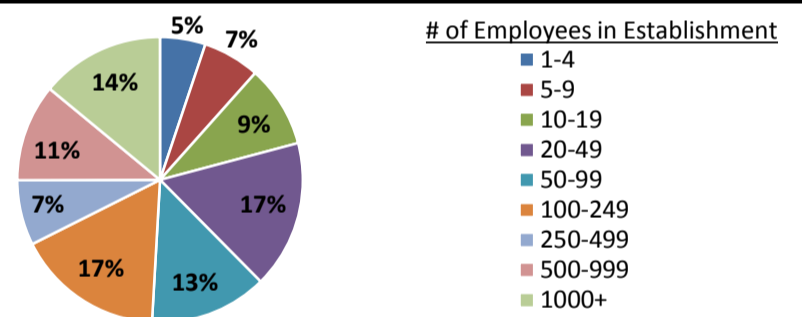
Historical Unemployment Rates



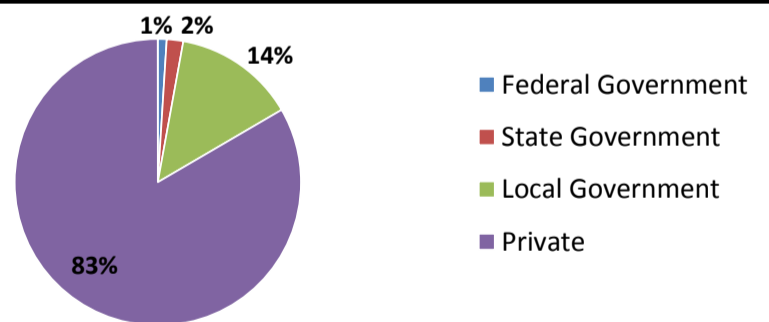
Projected Fastest Growing Industries in WDA (% growth 2014-2024)



Employment by Size Class (3rd Quarter 2016)



Employment by Ownership (3rd Quarter 2016)



Average Weekly Wage (3rd Quarter 2016)

	Q3 2016	Q2 2016	Q3 2015	Change	
				Quarter	Year
WDA	\$1,054	\$1,047	\$1,060	\$7	-\$6
Texas	\$1,042	\$1,000	\$999	\$42	\$43
US	\$1,027	\$988	\$974	\$39	\$53

Employment by Industry (3rd Quarter 2016, Percent Change)

Industry	Employment	% of total	% Change	
			Quarter	Year
Natural resources and mining	36,083	18.0%	2.6%	-10.4%
Construction	14,412	7.2%	-1.1%	-6.8%
Manufacturing	8,663	4.3%	-1.5%	-17.7%
Trade, transportation and utilities	44,114	21.9%	-1.3%	-7.3%
Information	1,860	0.9%	0.0%	5.8%
Financial activities	8,550	4.3%	-2.0%	-9.9%
Professional and business services	13,548	6.7%	-0.7%	-12.2%
Education and health services	38,165	19.0%	-2.6%	2.3%
Leisure and hospitality	21,844	10.9%	0.2%	-2.2%
Other services	6,228	3.1%	0.2%	-6.6%
Public administration	7,528	3.7%	1.6%	2.4%
Total	200,995	100.0%	-0.5%	-6.2%

Employment by Industry (3rd Quarter 2016)

