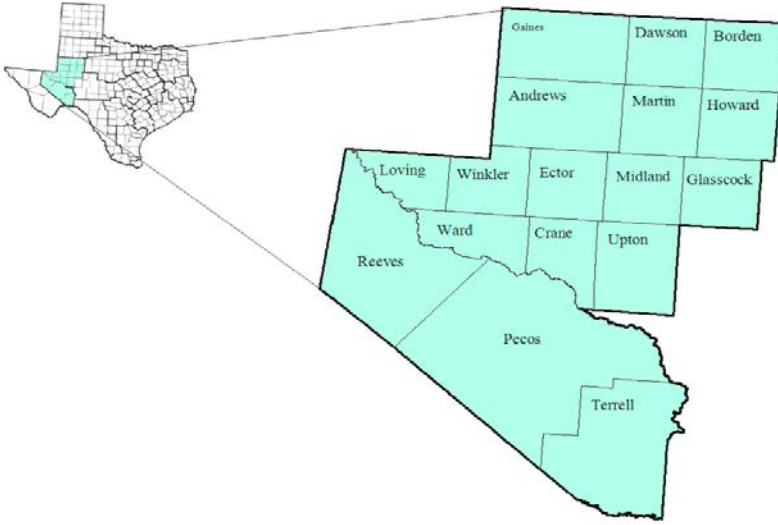


Permian Basin Workforce Development Area

August 2017



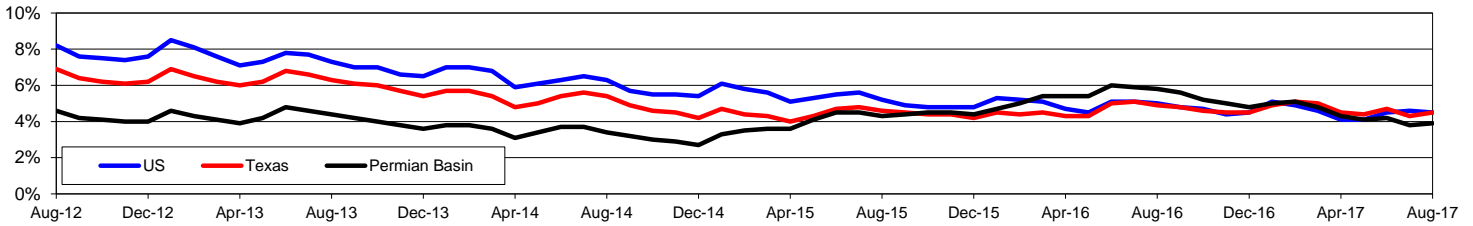
WDA Labor Force Statistics				
	Aug-17	Jul-17	Aug-16	OTY
CLF	219,372	219,822	222,854	-3,482
Employed	210,796	211,476	210,003	793
Unemployed	8,576	8,346	12,851	-4,275
Rate	3.9%	3.8%	5.8%	-1.9%

Texas Labor Force Statistics				
	Aug-17	Jul-17	Aug-16	OTY
CLF	13,406,779	13,434,624	13,295,171	111,608
Employed	12,802,022	12,850,647	12,638,955	163,067
Unemployed	604,757	583,977	656,216	-51,459
Rate	4.5%	4.3%	4.9%	-0.4%

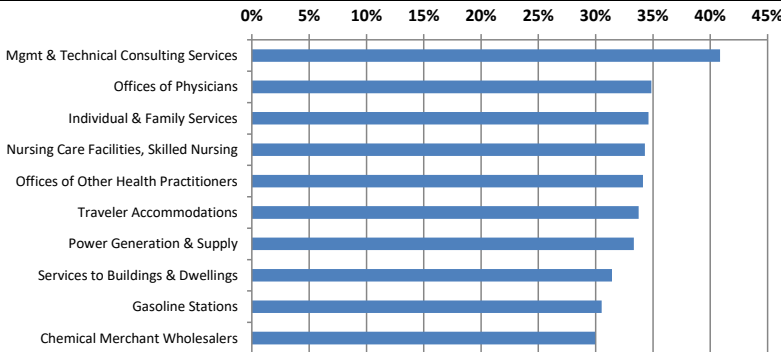
US Labor Force Statistics				
	Aug-17	Jul-17	Aug-16	OTY
CLF	160,863,000	161,911,000	159,800,000	1,063,000
Employed	153,576,000	154,470,000	151,804,000	1,772,000
Unemployed	7,287,000	7,441,000	7,996,000	-709,000
Rate	4.5%	4.6%	5.0%	-0.5%

Continued Claims for the Week of the 12th				
	Aug-17	Jul-17	Aug-16	OTY
WDA	989	1,006	3,360	-2,371
Texas	115,986	124,432	148,897	-32,911

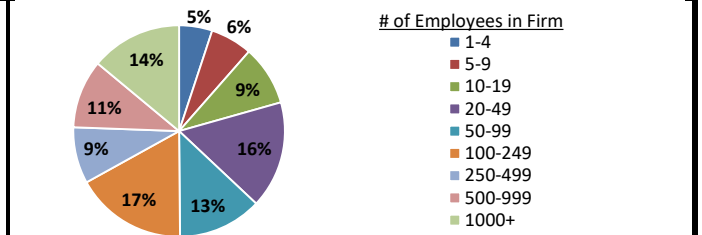
Historical Unemployment Rates



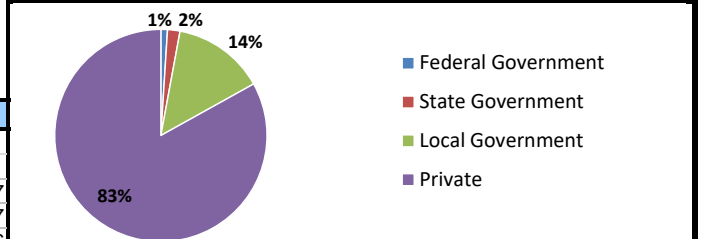
Projected Fastest Growing Industries in WDA (% growth 2014-2024)



Employment by Size Class (4th Quarter 2016)



Employment by Ownership (4th Quarter 2016)



Average Weekly Wage (4th Quarter 2016)

	Q4 2016	Q3 2016	Q4 2015	Change	
				Quarter	Year
WDA	\$1,121	\$1,056	\$1,129	\$66	-\$7
Texas	\$1,072	\$1,042	\$1,099	\$31	-\$27
US	\$1,067	\$1,027	\$1,083	\$40	-\$16

Employment by Industry (4th Quarter 2016, Percent Change)

Industry	Employment	% of total	% Change	
			Quarter	Year
Natural resources and mining	37,105	18.1%	2.9%	-5.0%
Construction	14,722	7.2%	1.4%	-2.9%
Manufacturing	8,779	4.3%	1.3%	-11.6%
Trade, transportation and utilities	44,896	21.9%	1.8%	-5.6%
Information	1,993	1.0%	7.2%	11.3%
Financial activities	8,595	4.2%	0.2%	-7.6%
Professional and business services	13,609	6.7%	0.5%	-11.2%
Education and health services	39,955	19.5%	4.6%	2.2%
Leisure and hospitality	21,284	10.4%	-2.5%	-1.4%
Other services	6,067	3.0%	-2.6%	-7.0%
Public administration	7,619	3.7%	1.1%	3.7%
Total	204,624	100.0%	1.7%	-3.8%

Employment by Industry (4th Quarter 2016)

